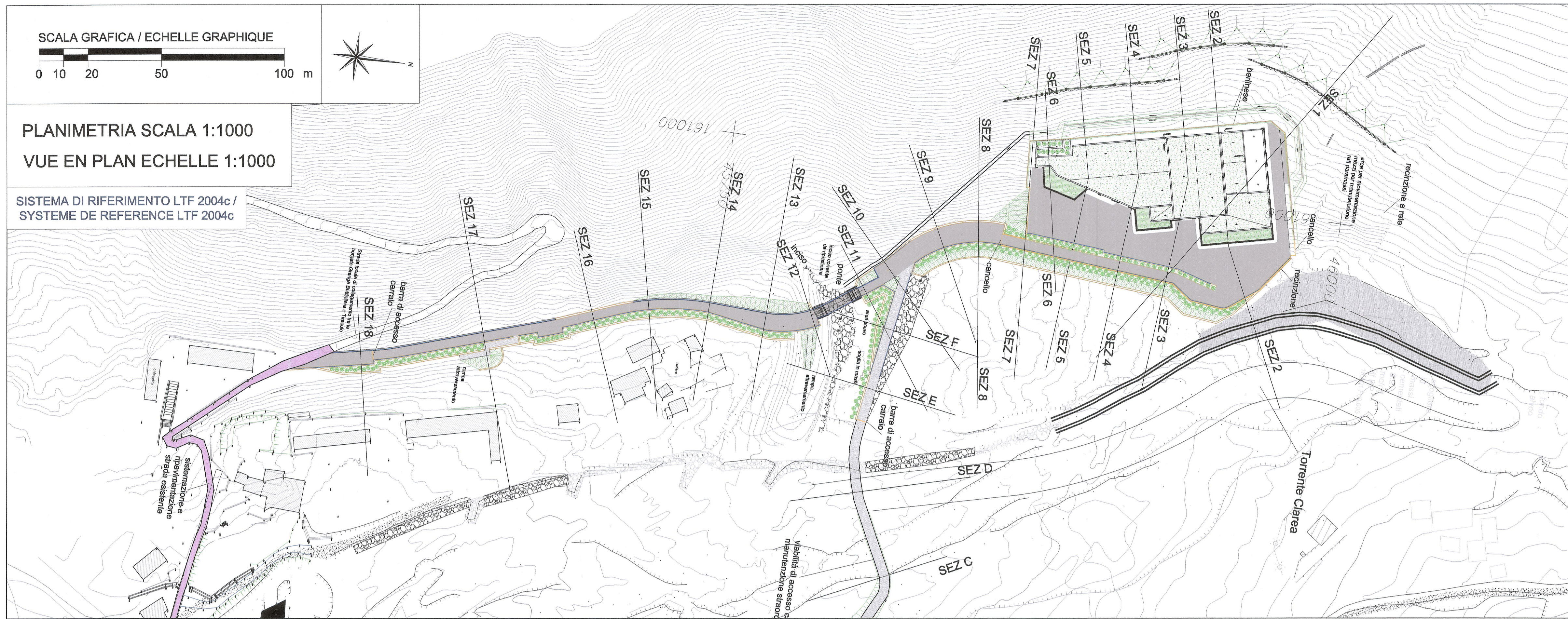


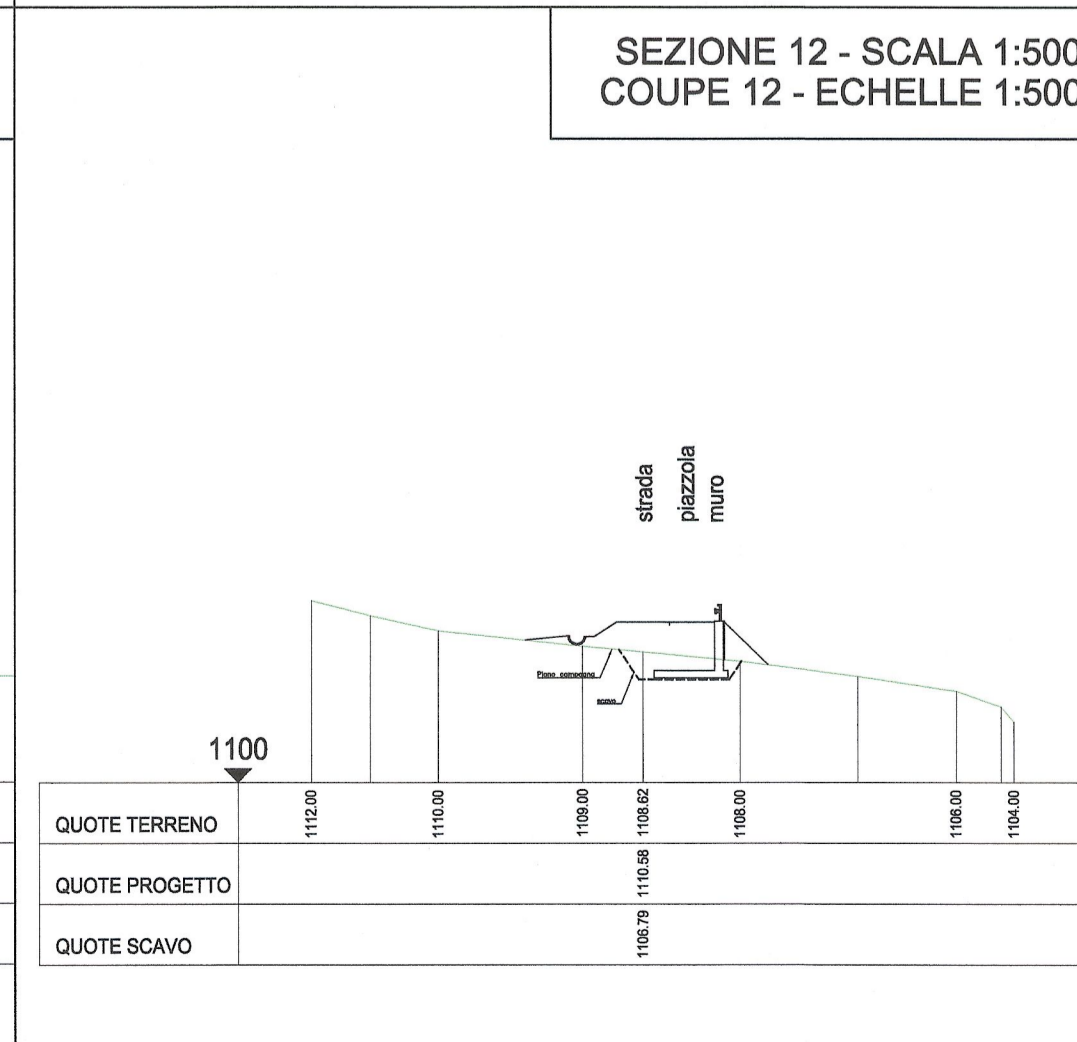
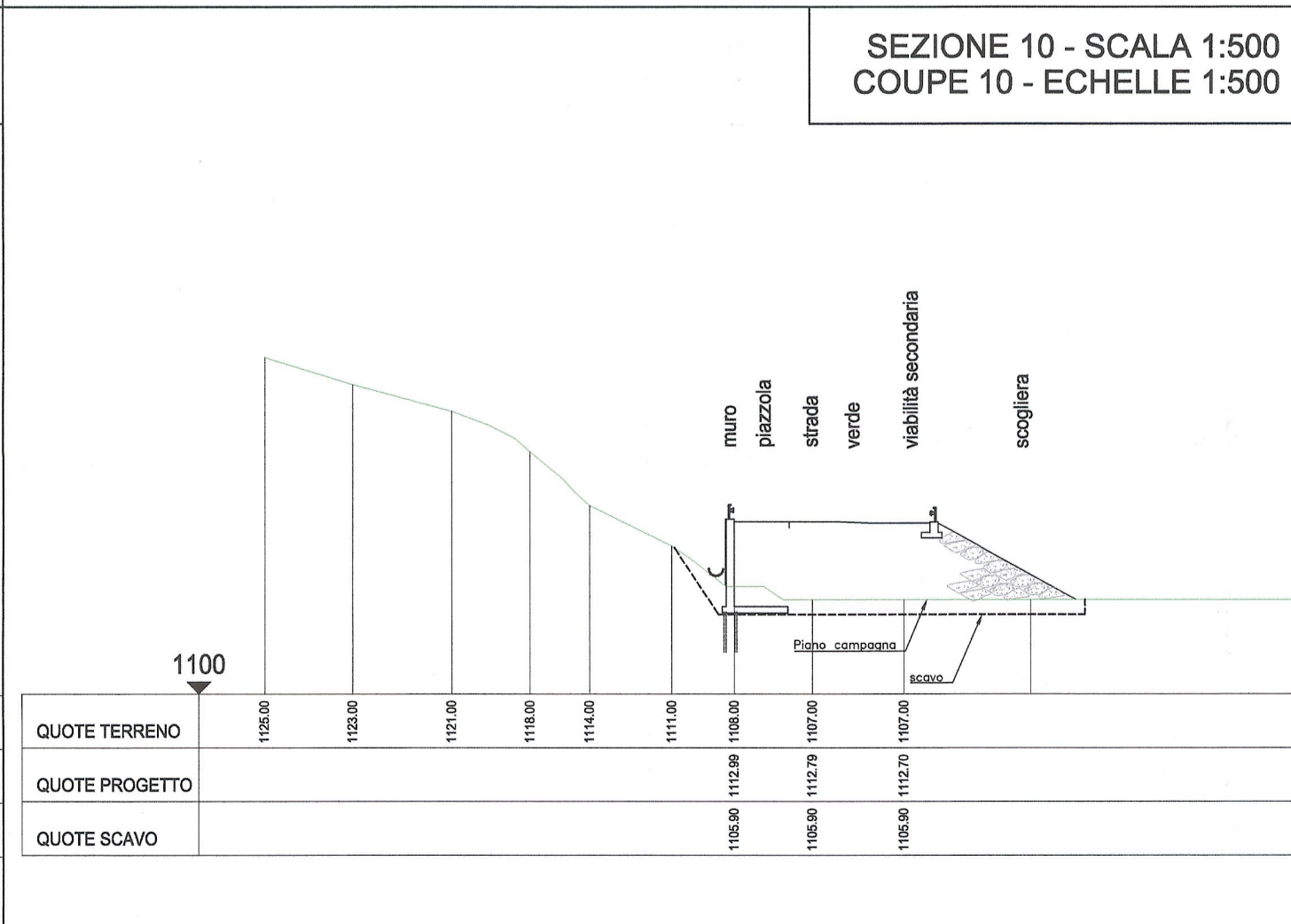
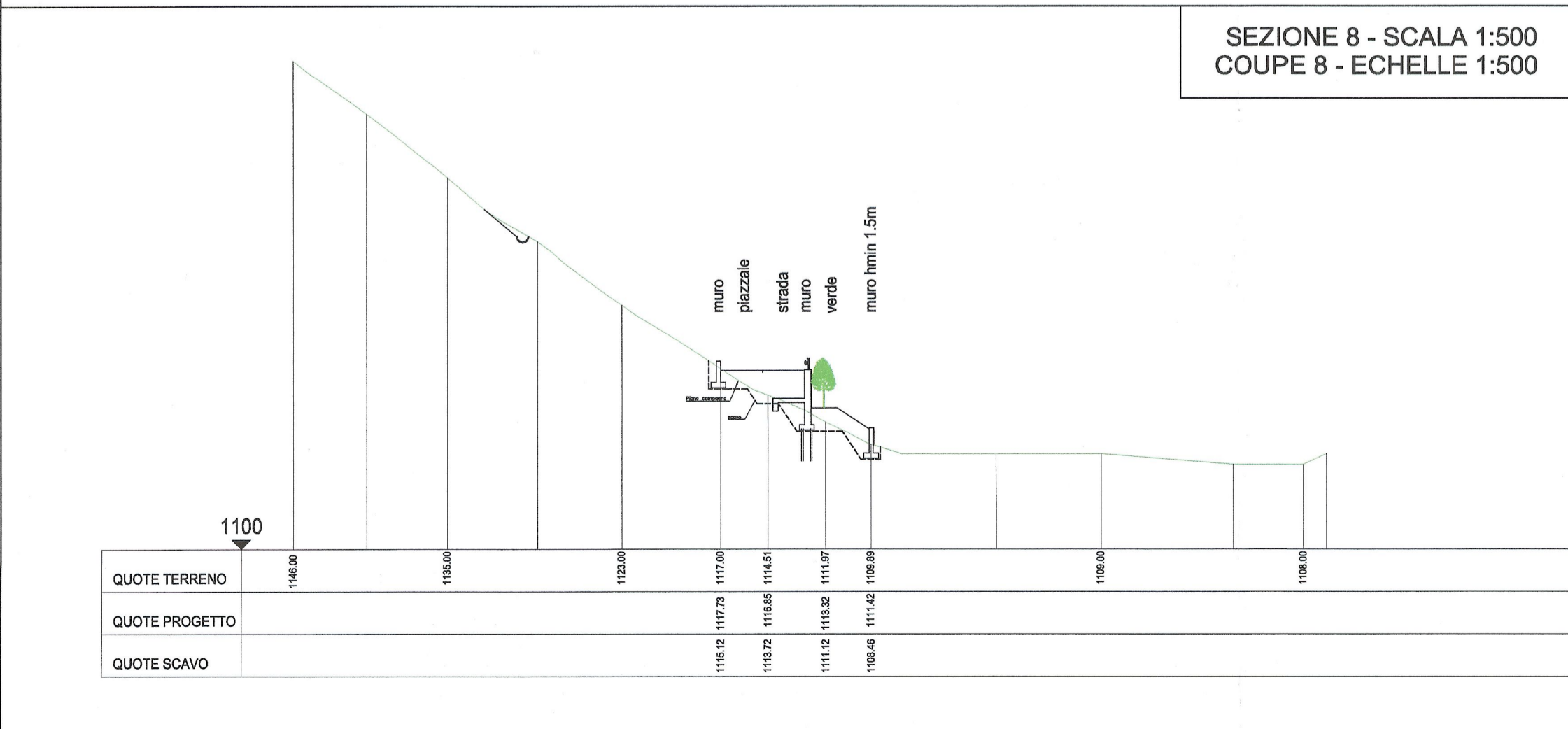
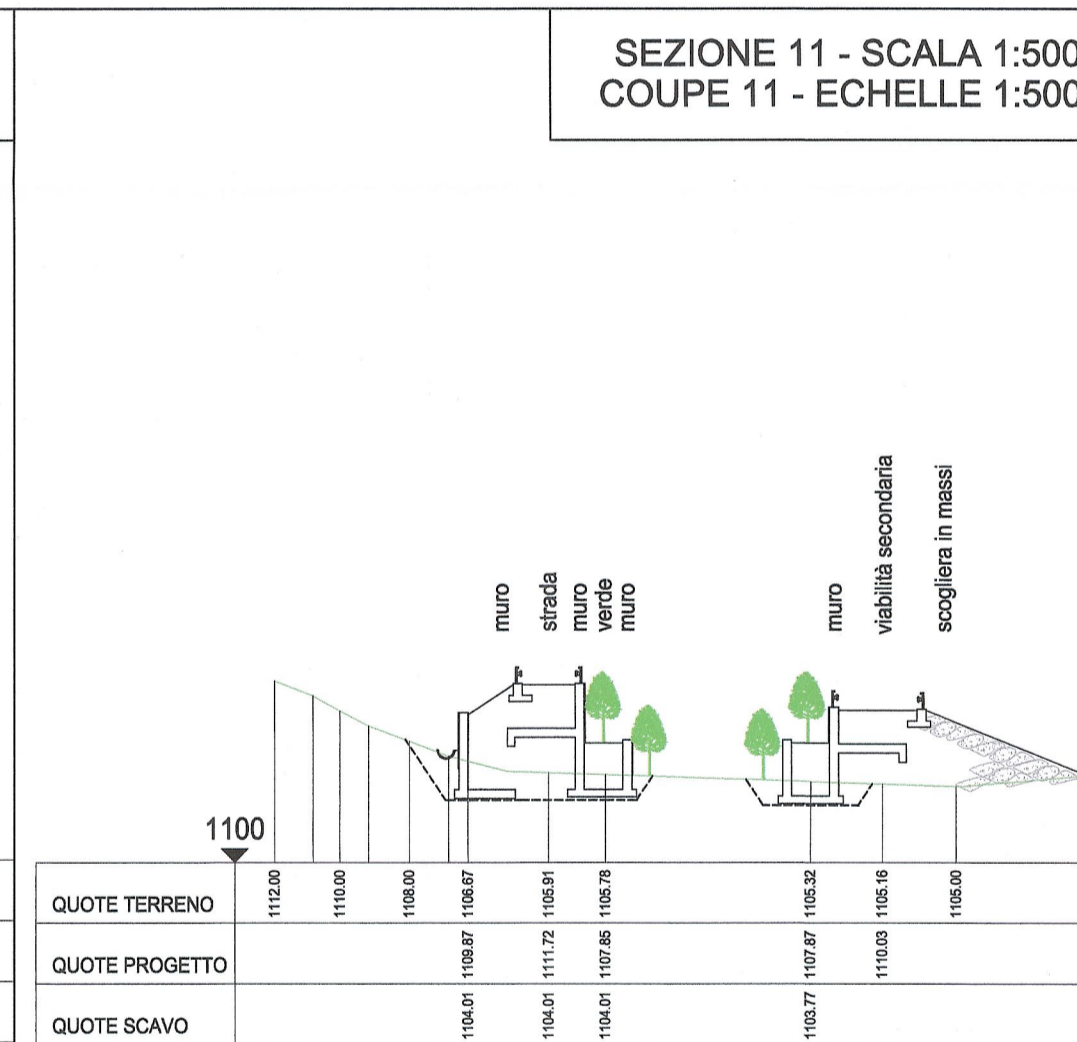
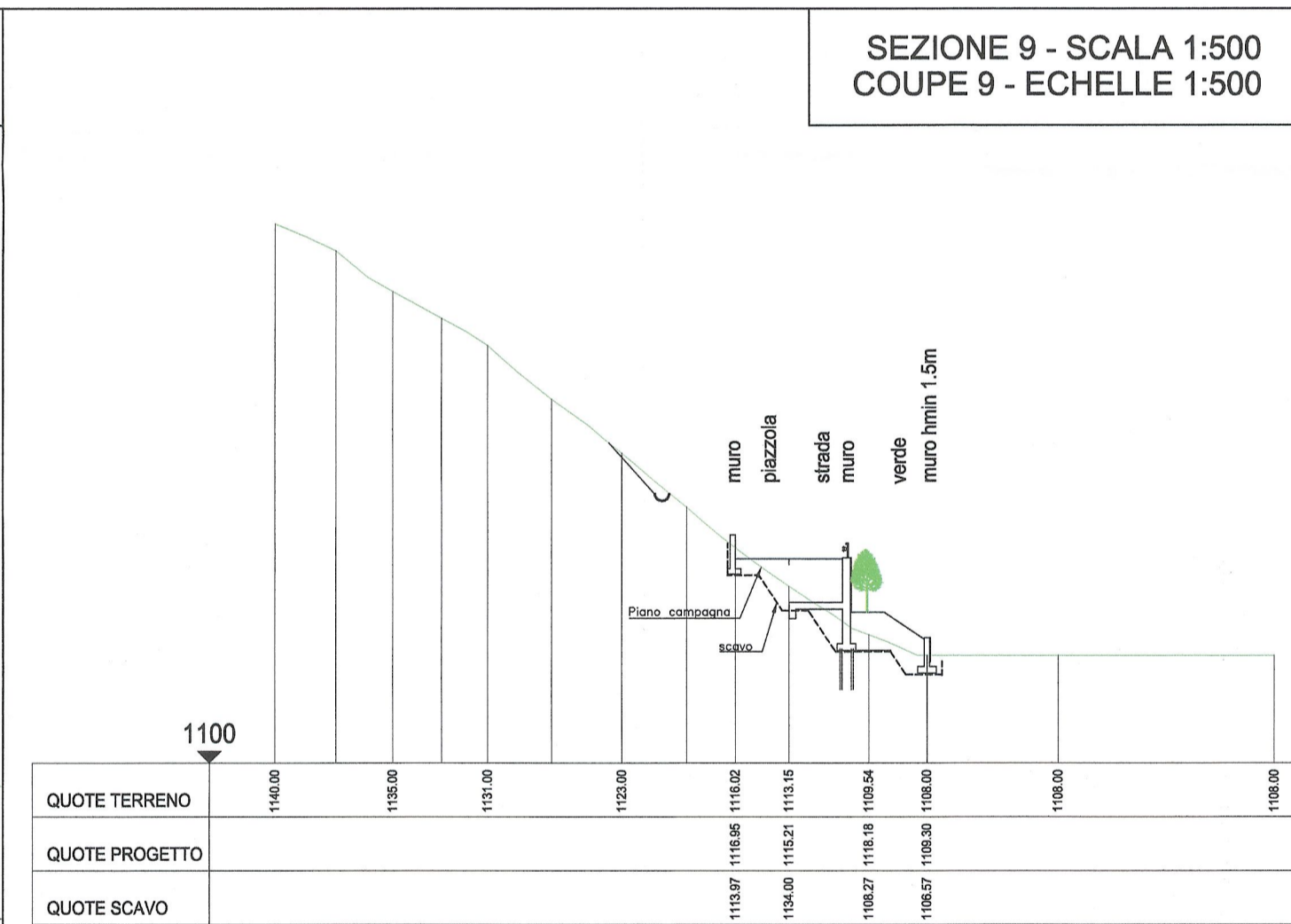
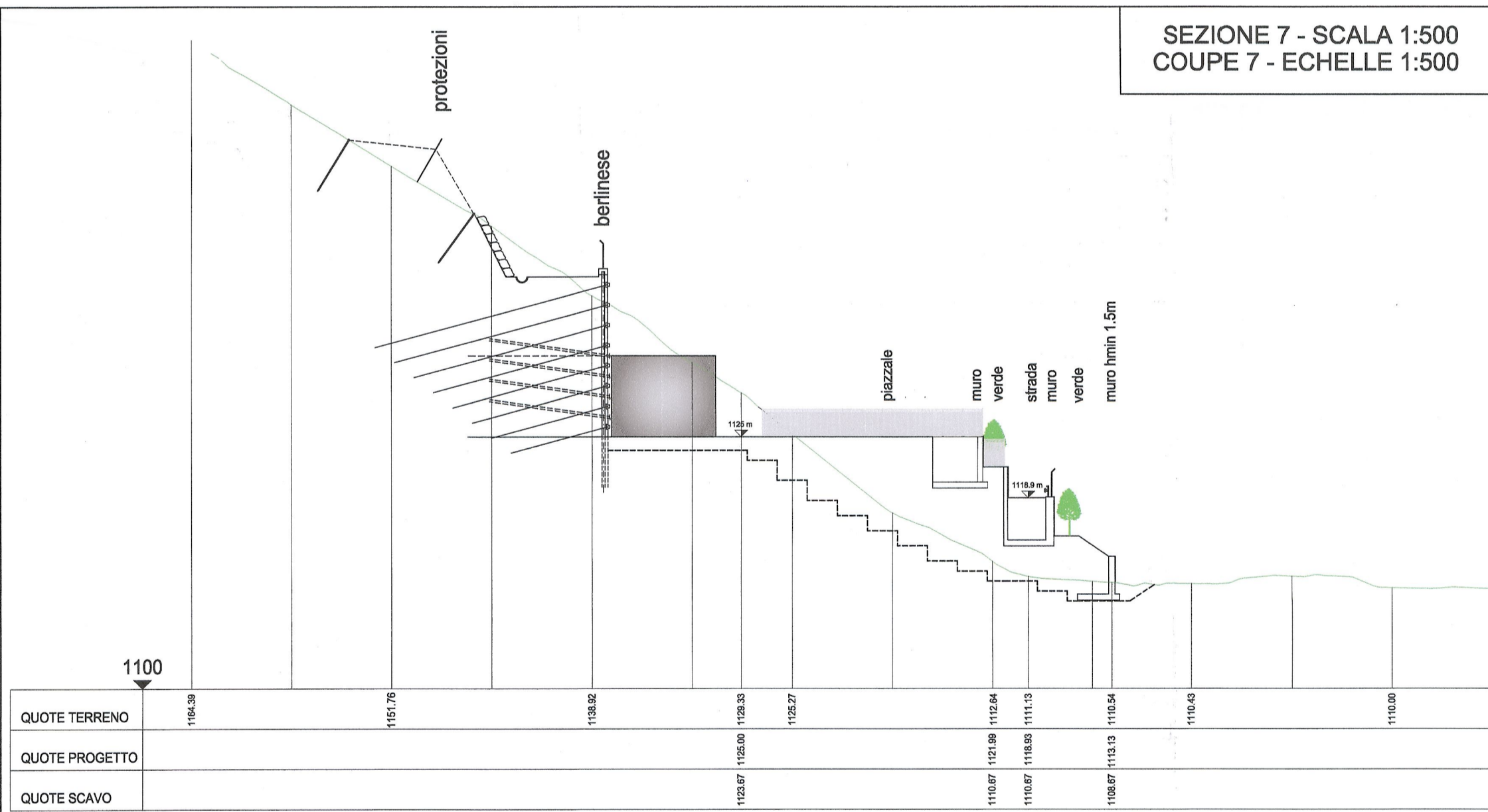
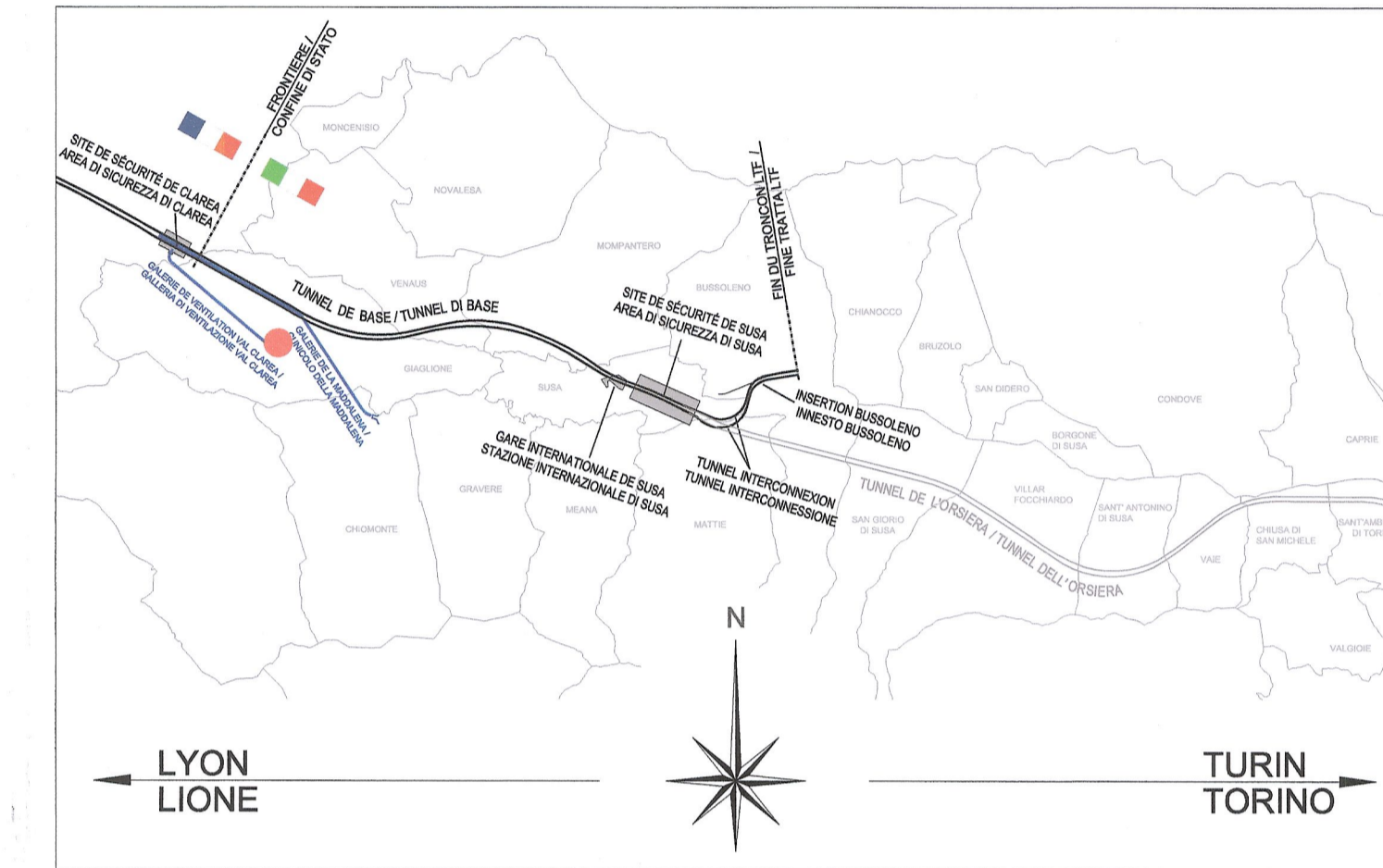
PLANIMETRIA SCALA 1:1000
VUE EN PLAN ECHELLE 1:1000

SISTEMA DI RIFERIMENTO LTF 2004c /
SYSTEME DE REFERENCE LTF 2004c



RIFERIMENTI / REFERENCES :
PD2_C3A_0476_26-47-70_10-02_Relazione illustrativa
PD2_C3A_0488_26-47-70_30-06_Profilo e sezione tipo

PIANO DI LOCALIZZAZIONE / VUE D'ENSEMBLE



LIASON LYON - TURIN / COLLEGAMENTO TORINO - LIONE
Partie commune franco-italienne / Section transfrontalière

NOUVELLE LIGNE LYON TURIN - NUOVA LINEA TORINO LIONE
PARTIE COMMUNE FRANCO-ITALIENNE - PARTE COMUNE ITALO-FRANCESE

REVISION DE L'AVANT-PROJET DE REFERENCE - REVISIONE DEL PROGETTO DEFINITIVO
CUP C11J05000030001

GENIE CIVIL - OPERE CIVILI

TUNNEL DE BASE - TUNNEL DI BASE
GALERIE DE VENTILATION ET ACCES VAL CLAREA -
GALLERIA DI VENTILAZIONE E ACCESSO VAL CLAREA
VOIRIE - VIABILITA'

NOUVELLE VOIRIE D'ACCES - VUE EN PLAN ET COUPES 1 DE 2
NUOVA VIABILITA' D'ACCESSO - PLANIMETRIA E SEZIONI 1 DI 2

Indice	Date / Data	Modifications / Modifiche	Elab / Conception de	Verifié par / Controlato da	Autorisé par / Autorizzato da
0	09/01/2013	Première diffusion / Prima emissione	G. VERGNANO (St. Quaranta)	M. RUSSO C. OGNIBENE	L. CHANTRON M. PANTALEO
A	08/02/2013	Révision suite aux commentaires LTF / Revisione a seguito commenti LTF	G. VERGNANO (St. Quaranta)	M. RUSSO C. OGNIBENE	L. CHANTRON M. PANTALEO

Tecnomont
Civil Construction
Dot. Ing. Aldo Menorella
Ordine Ingegneri Prov. TO n. 6271 R

INGEGNERI DELLA PROV. TORINO
DOT. ING. RUSSO MARCO
ING. PANTALEO MARIO
PROFESSIONALE
COL.N. 32582

Code Doc	P	D	2	C	3	A	T	S	3	0	4	8	4	A	A	P	P	L	A
	Phase / Fase		Signé / Firma																

ADRESSE GED / INDIRIZZO GED: C3A // // 26 47 70 30 03

ÉCHELLE / SCALA: 1:500/1:1000

LTF 888 - 1001 Avenue de la Boissière BP 80031 - F-72006 CHAMBERY CEDEX (France)
Tél: +33 (0) 4 79 68 56 50 - Fax: +33 (0) 4 79 68 56 75
RCS Chambéry 439 558 952 - TVA: FR 0343856562
Propriété LTF Tous droits réservés - Proprietà LTF Tutti i diritti riservati